

# COLOUR CHART



Design and manufacture since 1966

**TECN****DENT**  
ERGONOMIC INNOVATION

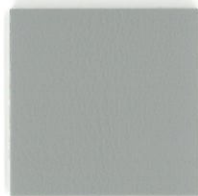
# UPHOLSTERY



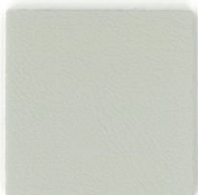
**1007**  
Nero  
Black  
Noir



**7502**  
Antracite  
Anthracite  
Gris anthracite



**1011**  
Grigio chiaro  
Light gray  
Gris clair



**3494**  
Grigio seta  
Silk gray  
Gris soie



**9002**  
Bianco  
White  
Blanc



**6001**  
Nocciola  
Taupe  
Noisette



**5011**  
Blu acciaio  
Steel blue  
Bleu acier



**5003**  
Blu notte  
Dark blue  
Bleu foncé



**1009 D**  
Blu elettrico  
Electric blue  
Bleu électrique



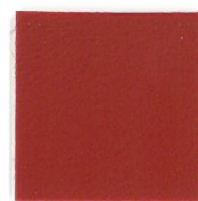
**5023**  
Carta da zucchero  
Pastel blue  
Bleu pastel



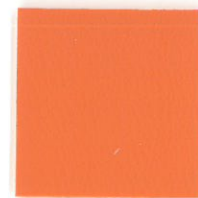
**3491**  
Blu pervinca  
Perwinkle blue  
Bleu pervenche



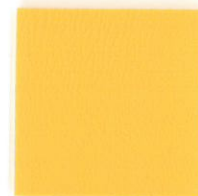
**15141**  
Blu metallizzato  
Sparkle blue  
Bleu métalliquè



**1414**  
Rosso  
Red  
Rouge



**7791**  
Salmone  
Salmon  
Saumon



**5503**  
Zafferano  
Saffron yellow  
Jaune safran



**5017**  
Rosso fragola  
Strawberry red  
Rouge fraise



**8017**  
Cioccolato  
Chocolate  
Chocolat



**8017 UM33**  
Marrone Suede  
Suede Brown  
Suede Marron



**14966**  
Verde metallizzato  
Sparkle green  
Vert métalliquè



**14766**  
Rosso metallizzato  
Sparkle red  
Rouge métalliquè



**5511**  
Verde foglia  
Leaf green  
Vert feuillage



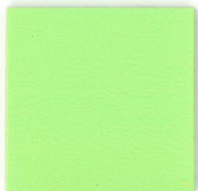
**4003**  
Viola erica  
Heather violet  
Violet bruyère



**3493**  
Verde acquamarina  
Acqua marine green  
Turquoise



**5510**  
Porpora  
Purple  
Pourpre



**5515**  
Verde mela  
Apple green  
Vert pomme



**3492**  
Ciclamino  
Cyclamen violet  
Cyclamen



**7021**  
Grigio Nero Satin  
Black Grey Satin  
Gris Noir Satin



**21366**  
Platino  
Platinum  
Platine



**68001**  
Verde oliva  
Olive green  
Vert olive

# PU

**T3**

GRIGIO  
GREY  
GRIS

**T4**

CHAMPAGNE  
CHAMPAGNE  
CHAMPAGNE

**T7**

BIANCO  
WHITE  
BLANC

**T8**

ANTRACITE  
ANTHRACITE  
ANTHRACITE

**Tutti i componenti in poliuretano prodotti da Tecnodent sono HCFC FREE**  
**All polyurethane parts manufactured by Tecnodent are HCFC FREE**  
**Toutes les parties en polyurethane produites par Tecnodent sont HCFC FREE**

**Composizione e proprietà similpelle**

Peso ca. 1100 g/m<sup>2</sup>, 97% PVC, 3% PU compound  
Permeabilità all'aria e al vapore, morbido, gradevole al tatto, elastico, resistente all'abrasione. Resistente a trazione e strappo prolungato, ignifugo secondo ISO 6875 e UNI 4818.74

**Upholstery composition and properties**

Weight about 1100 g/sqm, 97% PVC, 3% PU compound  
Air and steam permeable, soft, good touch, elastic, abrasion and tear resistant, flame retardant according to ISO 6875 and UNI 4818.74

**Composition et propriétés du revestment**

Poids environ 1100 g/mc, 97% PVC, 3% PU compound  
Perméabilité à la vapeur d'eau et à l'air, souplesse élevée, toucher agréable, élasticité, résistance à l'abrasion, rupture et déchirure amorcée, résistance au feu selon les normes ISO 6875 et UNI 4818.74

TECNODENT S.r.l.  
Via 63ª Brigata Bolero, 24  
40033 Casalecchio di Reno  
[BOLOGNA] - ITALY  
Tel. +39 051 6131143  
Fax +39 051 575402  
info@tecnodent.com  
www.tecnodent.com